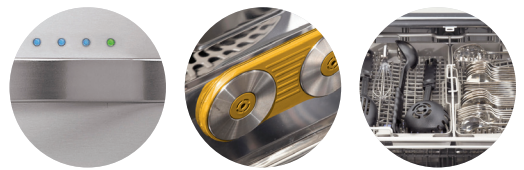


# LSDF995ST

Fully-Integrated  
SteamDishwasher™



## The Gentle Power of Steam!

### CAPACITY

- Cleans up to 16 Place Settings
- Adjustable 3rd Rack
- Design-A-Rack™ System and DuraGlide™ Upper Rack
- 3-in-1 Cutlery Baskets
- Versatile Stemware Holder

### STYLE AND DESIGN

- Premium Stainless Steel Finish with Matching Commercial Handle
- Fully-Integrated Control Panel with SmoothTouch™ Controls
- Signalight™ LED Cycle Indicator Lights
- IllumiTub™ Lighting
- Nylon Coated Racks and Tines

### PERFORMANCE

- SteamDelicate™ Cycle
- SteamFresh™ Cycle
- Dual Intensity™ Wash Cycle
- LoDecibel™ Quiet Operation
- SenseClean™ Wash System
- 7 Wash Cycles (Including Steam) and 3 Spray Arms
- Sanitary Rinse
- Multi-Level Water Direction
- Detergent and Rinse-Aid Dispenser
- Hybrid Condensing Drying System
- Slim Direct Motor™
- Built-In Food Disposer
- Delay Start up to 24 Hours



● Stainless Steel (ST)



**LG**  
Life's Good



## LSDF995ST

### Fully-Integrated SteamDishwasher™

#### TrueSteam™ Technology

The gentle power of steam! Allows for thorough cleaning of baked on foods while using less water than the other power scrub methods. Also allows for enhanced cleaning performance when cleaning fine china and stemware items on the delicate cycle.

#### LoDecibel™ Quiet Operation

Ultra Quiet at only 45dB with built in food disposer, this dishwasher is among the quietest in the industry.

#### Adjustable 3rd Rack

The convenient 3rd Rack provides more capacity and is perfect for large kitchen utensils and cutlery. Two maneuverable baskets within the rack can be fastened together to create a secure area to wash smaller, delicate items.

#### Dual Intensity™ Wash Cycle

This setting enables you to fully customize the wash cycle intensity for the upper and lower racks independently – all in the same load.

#### SteamDelicate™ Cycle

Safely and effectively clean delicate stemware and china with the exclusive SteamDelicate™ cycle. Steam penetrates the sullied dishes and cleans with care as gentle as hand washing.

#### SteamFresh™ Cycle

Sanitize dishes using less energy and water with LG's SteamFresh™ cycle. This cycle is perfect for quickly and effectively sanitizing special occasion dinnerware and platters that are seldomly used.

#### Half Load Wash Cycle

Need to wash a small load? The LSDF995 gives you the option to clean dishes on the upper or lower rack, and in the process use much less energy.



<b>CAPACITY</b>	
Total Place Settings	16
Upper Rack Capacity	12"
Lower Rack Capacity	14"
<b>RACKS AND BASKETS</b>	
Cutlery Baskets	3-in-1
Stemware Holders	•
Racks and Tines	Nylon Coated with Rounded Tips
Manually Adjustable Upper Rack	•
DuraGlide™ Upper Rail Rack	•
<b>Design-A-Rack™ System</b>	
One-Touch Adjustable Upper Rack	•
Folding Tines	•
Removable Tines	•
Adjustable 3rd Rack	•
<b>STYLE AND DESIGN</b>	
Electronic Controls	Hidden SmoothTouch™ Controls
Time Remaining Indicator	•
Rinse-Aid Indicator	•
Signalight™ Cycle Indicator Lights	•
IllumiTub™ Lighting	•
Tub Material	Stainless Steel
Handle	Matching Commercial Handle
Available Colors	Stainless Steel (ST)
<b>FEATURES</b>	
Tub & Door Insulation	Damping Sheet
LoDecibel™ Quiet Operation	45dB
Slim Direct Motor™	•
Overflow Detector	•
120°F Inlet Water Capability	•
Built-In Food Disposer	•
Self-Cleaning Filter	•
Delay Start	Up to 24 Hours
Child Lock	•
<b>PERFORMANCE</b>	
Wash Cycles	7 (Including Steam)
SenseClean™ Wash System	•
Half Load Wash Cycle	Upper and Lower Rack
Dual Intensity™ Cycle	•
Steam Cycles	SteamDelicate™, SteamFresh™, Steam Option
Sanitary Rinse Cycle	•
Extra Rinse Cycle	•
Variable Spray Intensities	Strong/Medium/Soft
Multi-Level Water Direction	•
Hybrid Condensing Drying System	•
<b>POWER SOURCE/RATING</b>	
Ratings/Requirements/Type	UL Listed/120 V/60 Hz
Energy Rating / Energy Factor	Energy Star / 0.76
<b>DIMENSIONS</b>	
Dimensions (WxHxD)	23 3/4" x 33 5/8" x 24 5/8"
Clearances (WxHxD)	24" x 34" x 25"
Carton (WxHxD)	27 1/5" x 35 1/10" x 29 3/5"
Weight (Unit/Carton)	114 lbs./121 lbs.
<b>WARRANTY</b>	
	2 Years Parts and Labor, 5 Years Limited on Control Board and Rack Parts, Lifetime on the Stainless Steel Tub and Door Liner
<b>UPC CODE</b>	
LSDF995ST Stainless Steel	48231011013

[www.LG.com](http://www.LG.com)

LG Electronics U.S.A., Inc.  
1000 Sylvan Avenue Englewood Cliffs, NJ 07632  
Customer Service and Technical Support: (800) 243-0000

Dimensions and weights are approximate. Design, features and specifications subject to change without notice.

© 2010 LG Electronics USA, Inc. All rights reserved. "LG Life's Good" is a registered trademark of LG Corp. All other product and brand names are trademarks or registered trademarks of their respective companies. 08/10